

Parent Orientation

2018-2019

ASU Preparatory Academy
ARIZONA STATE UNIVERSITY



Mission

ASU Preparatory Academy is an innovative K-12 charter school where teachers, students and families share the same goal – college graduation. Our mission is to provide premium environments for learning, helping all students become innovative leaders and problem solvers who are prepared for success in college and their preferred careers.

Cambridge Curriculum

AZ College & Career Ready Standards

Academics | Partnership | Leadership | Innovation



Administration

Principal:

Claudia Mendoza

claudia.mendoza@asu.edu



Dean of Students/Athletic Director:

Amy Kochis

amy.kochis@asu.edu



Dean of Students/Counselor:

Erin Nielsen

erin.nielsen.1@asu.edu



Curriculum Night

- We hope you will join us for our scheduled Curriculum Night(s). Teachers will share the academic curriculum students will learn this year. You will see and understand your child's school day and also the importance of our school-home partnership. We look forward to seeing you here!
- K - 5: Tuesday, Aug. 7 - 5:30 p.m.
- 6 - 8: Thursday, Aug. 9 - 5:30 p.m.



Parent information about ASU Prep STEM, PK-8

Lunch

- Classy Touch Catering
 - Monthly Lunch menu
 - OR
- Bring lunch from home

Reporting Student Absences

- 480-727-5709**
 - Also inform teacher by email or phone!

Class Parties

- All food must be store-bought and include nutritional labels (food allergies.)
- **No siblings!**

Birthday Celebrations

- Not celebrated with treats.
- We Encourage:
 - parent lunch w/ student
 - donate a book to class in their honor
 - come read a book
 - Party invitations can not be passed out at school.



Birthday Lunch

- Parents are welcome to have lunch with their children on their birthday.

Please note change:

- This year we ask that parent(s) sit with their children in our cafeteria or designated lunchroom.



Parent information about ASU Prep STEM, PK-8

Uniforms

- Maroon Shirt
 - collared shirt (any retail store!)
 - ASU Prep optional
- Beige Bottom
 - Shorts (no cargo style)
 - Pants
 - Skorts (girls)
 - Skirts

Volunteer Hours

- Encouraged but NOT mandatory
 - 30 hours
 - Automatically tracked through front office sign-in

Parent Communication

- Teacher websites**
 - updated weekly
- Emails from:**
 - Grade-level
 - Front office
- School Newsletter**
 - weekly via email



Parent Communication

School Messenger

- Opt- In from your mobile phone now!
Send "Y" or "Yes"
to **67587**

* Our goal is 100% family participation!



Dress Code

- **Preschool - Grade Eight:**
 - The school uniform is a maroon polo top and khaki bottoms.
 - On ASU Spirit Fridays, students may choose to wear the school uniform, a gold polo or any ASU T-shirt and khaki bottoms.



Dress Code

Tops:

- **Maroon** polo-
 - Solid color collared polo shirts with buttons
 - (ASU Prep logo accepted but is not mandatory)
- Shirts may be short or long sleeved
 - Must be size appropriate
 - Must be tucked in at all times!



Dress Code

Bottoms:

- Khaki
 - Pants, shorts, skorts or skirts
 - no cargo shorts, no logos or writing accepted
 - Must be size appropriate
 - Hemlines for girl's shorts, skorts and skirts must extend beyond the out-stretched fingers as the arm is relaxed against the side of the body
 - Shorts under skirts highly recommended!!*
 - No jeans or denim may be worn except on designated non-uniform days



Dress Code

Shoes:

- For the safety of your child.**

ONLY athletic shoes with non-slip sole are allowed and they must be worn with socks or tights!

Socks: ONLY white, black or maroon



Dress Code

Outerwear:

- ONLY white, black or maroon turtlenecks/undershirts may be worn underneath the polo style shirt
- ONLY white, black or maroon tights/leggings-
- Only SOLID white, black or maroon jackets, sweatshirts or sweaters (no logos, except ASU accepted) may be worn over a uniform shirt with the collar showing.

All other jackets must be taken off while indoors!



Dress Code

Interpretation of Dress Code

Any interpretation of the dress code will be determined solely by the administration at ASU Preparatory Academy including the definitions of “interference with the educational process” and “items that present a safety hazard.” Violations of the dress code will have assigned consequences outlined in the Student Code of Conduct and at the discretion of the administration.

- **Mascot:** Sun Devil
- **School Colors:** Maroon and Gold



Drop-off / Pick-up Procedure

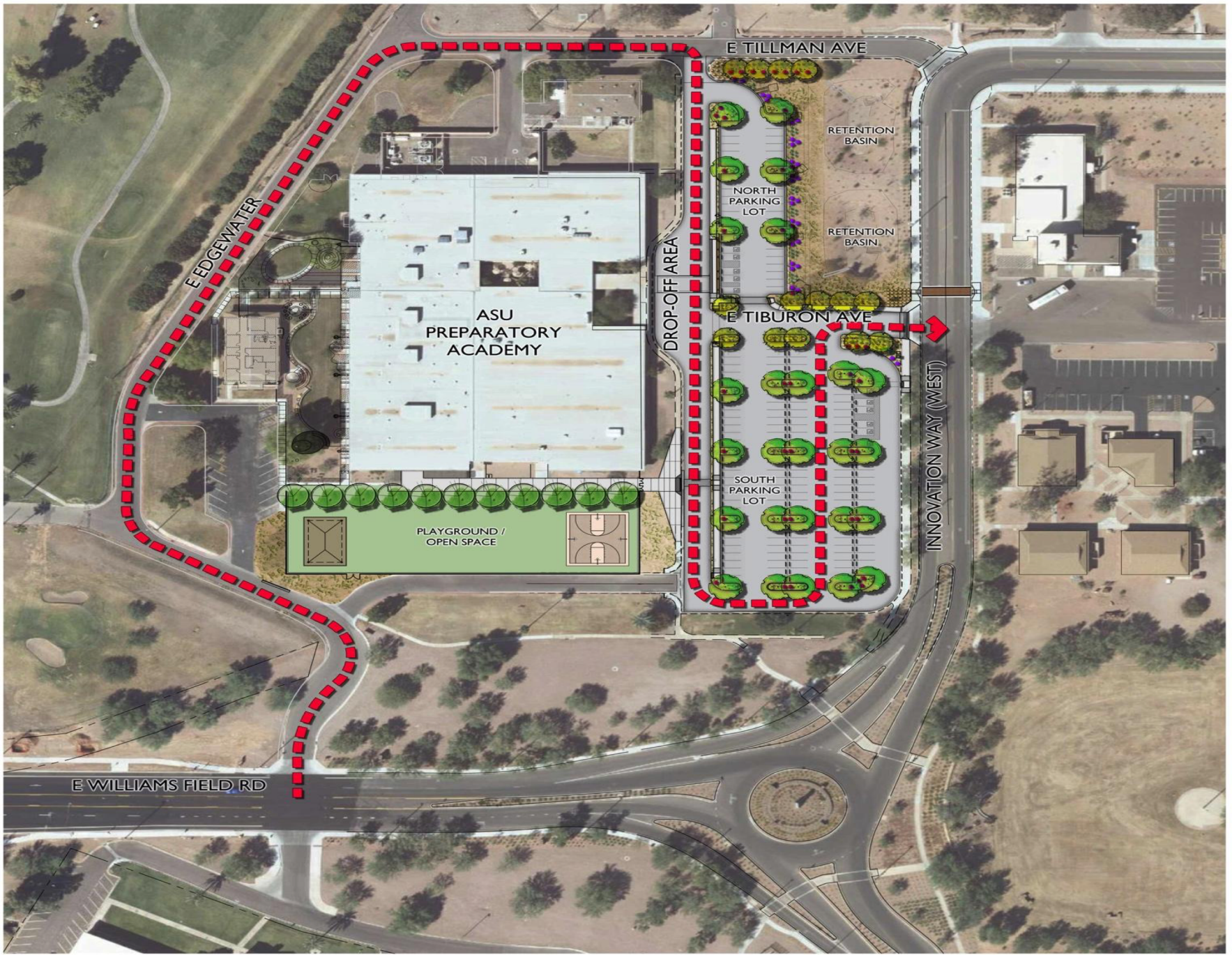
- School starts at 8:15am and dismissal is at 3:15pm
 - Students may be dropped off between 7:45 - 8:15am
 - We strongly encourage all families to drop-off and pick-up using the designated car line!
- **Kindergarten** parents will be allowed to walk their children **to class** for the **first 2 days** of school. On the **third** day parents will say goodbye to their children before reaching the playground area and will not be permitted on the playground.
- **Grades 1st thru 8th** parents will be allowed to walk their children to their **classroom line** on the playground on the **first day** of school **ONLY**. However, if you are a returning family and know the routine, we encourage you to use car drop-off– even on the first day!
 - After the first day, for the safety of our students:
 - Parents are **not** allowed on the playground.
 - Parents are **not** allowed to walk their child to their classroom.



Drop-off / Pick-up Procedure

Please follow this Traffic Flow Map when dropping off and picking up students!





E TILLMAN AVE

E EDGEWATER

ASU
PREPARATORY
ACADEMY

DROP-OFF AREA

RETENTION
BASIN

NORTH
PARKING
LOT

RETENTION
BASIN

E TIBURON AVE

SOUTH
PARKING
LOT

INNOVATION WAY (WEST)

E WILLIAMS FIELD RD

PLAYGROUND /
OPEN SPACE

Important!

- Please **drop your student(s) off as you enter the 'drop-off' curb** in front of the school and students will walk up the sidewalk. This allows for a more efficient process. **THANK YOU!!**
- Please keep your **name plate displayed the entire time**. This helps our staff with locating your student and getting him/her to your car faster!
- Drop-off: Please be sure your **student is ready** to hop off the car as you arrive at curb. Make sure shoelaces are tied, their backpacks are ready to grab & etc.
- **If you choose to drop off before 7:45am**, this means your student will be **unsupervised** outside our school gates.



Drop-off / Pick-up Procedure

East Parking Lot:

- Parking in the Parking Lot without a parking permit for longer than 5-7 minutes may result in a citation from the ASU Parking Department, please park at your own risk!
- For the safety of your student:
 - If you choose to park, you **MUST WALK** your student on or off campus by using the CROSS WALK provided.



Drop-off / Pick-up Procedure

- **Small West Lot:**
 - ONLY Preschool Parents will be allowed to use this lot as they must sign their students in and out every day.
 - FYI: Daycare Buses
 - For pick-up, vans will be allowed to enter line off of Tilman just north of school.
 - They pick up a various schools.



Discipline

School Rules:

1. Respect Yourself
2. Respect Others
3. Respect This Place



Discipline K – 5

Pink Ticket:

- If your student receives a pink ticket, he/she made a bad choice at school. Pink tickets must be signed by you and returned to school the following day.

*You will also receive either a phone call or an email from the teacher.

Please refer to our student handbook & teacher's Weebly sites for more information on disciplinary action.



Discipline 6 – 8

Agenda Line:

- If there is a line drawn across your student's agenda he or she has made a bad choice, and will be assigned a lunch detention.

*You will also receive either a phone call or an email from the teacher.

Please refer to our student handbook & teacher's Weebly sites for more information on disciplinary action.



Zero tolerance for Bullying

ASU Prep is committed to keeping our school bully-free.

If we are not aware of potential bully situations that are ongoing we can't investigate and handle appropriately so we ask that you notify us right away.

Who to Notify?:

- Teacher
- Dean of Students:
 - Erin Nielsen or Amy Kochis
- Principal – Claudia Mendoza



ASU Prep's Anti-Bullying

– ASU Prep's Anti-bullying Pact

- We will not bully others.
- We will help students who are bullied.
- We will include students who are left out.
- If we know that somebody is being bullied, we will tell an adult at school and an adult at home.
- We will respect ourselves, others and this place.

• Olweus Anti-Bullying Program

– School Kick-off: Monday, August 6

- Parent Information will be available at each designated Curriculum Night.



Olweus Think Sheet

- If your student is sent home with a **‘Think Sheet’** it is because they displayed bullying behavior toward another student. This sheet needs to be signed by a parent and returned to the homeroom or Foundations teacher the next day.
 - You will be called or emailed by the reporting teacher giving you more details about the behavior and the consequence given to your student.
 - Please refer to our student handbook for more information on disciplinary action.



Character Education Program

- **The Leader in Me**

- Be Proactive
- Begin with the End in Mind
- Put First Things First
- Think Win-Win
- Seek First to Understand, Then to Be Understood
- Synergize
- Sharpen the Saw



ILP Parent-Teacher Conferences

- 4 times per school year
 - Dates:
 - July 26th- Meet the Teacher/Open House & Resource Fair
 - October 9th , 10th
 - January 8th , 9th
 - March 14th , 15th



K-4 Specials

- Art
- Music
- PE
- Español
- STEM



K-8 Art Mrs. Olsen



I am thrilled to continue the Art Program at ASU Prep this year.

Students will be learning a variety of techniques in drawing, painting, sculpture and mixed media.

Please visit my website:
solsenasuprep.weebly.com

Follow us on Instagram @asu.prep.art

Feel free to contact me with questions or concerns.

Stormy.Olsen@asu.edu

(480) 727-5844



K- 4 Music, Mrs. Jernigan

Welcome to the 2018-2019 School Year!

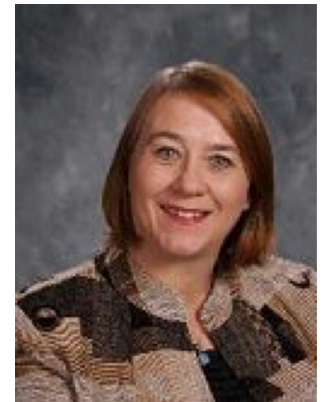
This will be an exciting year filled with singing, movement, dance and playing instruments with music from around the world.

I will communicate with you through my school website, emails, phone calls and notes home.

susan.jernigan@asu.edu

sjerniganasuprep.weebly.com

(480) 727-5846



I am looking forward to seeing everyone!

PS. I have also been known to play with LEGO Robots ☺ and Harps!



K-4 Physical Education

Coach Fahey

P.E. Requirements

- Every child will need to wear closed toe tennis shoes for P.E.
- Water bottles are encouraged on P.E. days. Please make sure they are labeled with your child's name
- Hats may be worn during P.E. as long as they are not distracting to the class
- P.E. is located in room 102 this year. Stop by and say hi sometime!

Contact Information

I am looking for volunteers to help throughout the year. Please contact me via:

Email: christie.fahey@asu.edu

Website: christiefaheyasuprep.weebly.com

Phone: 480.727.5716

I am looking forward to a phenomenal year!

-Coach Fahey



Español K-4: Sra. Lawrence

I will communicate with you through my school website, emails, phone calls, and notes home.

Volunteers are welcomed and encouraged! Please see my contact information below:

- **Email:** gegonza4@asu.edu
- **Website:** glawrenceasuprep.weebly.com
- **Office:** (480) 727-5700
- **Direct:** (480) 727-5859



Amor, Paz, y Español,
G. Lawrence



K-4 STEM, Mrs. Houseman

This year in the STEM Lab your child will work collaboratively with their peers to solve real world problems incorporating science, technology, engineering and math.

All communication regarding classwork and discipline will be handled through my Weebly Website and phone calls home. Volunteers are welcomed and encouraged! Please see my contact information below:

- Danielle.Houseman@asu.edu
- dhousemanasuprep.weebly.com
- (480) 727-5747



I am looking forward to working with and meeting all families at ASU Prep!



5-8 Specials

- Art
- Music
- PE
- Español



5th STEM

Mrs. Obert

- Angie.Obert@asu.edu
- aobertasuprep.weebly.com
- (480) 727-5700



5-8 Grade Music

Parent communication will be made through website, email, and phone calls.

- Weebly: mkillianasuprep.weebly.com
- Email: miranda.killian@asu.edu

Feel free to contact me at any time regarding issues or concerns within the classroom.

Classroom expectation

- Pencils are required to bring to class everyday. (Everything else I will supply or contact you in advanced)
- Music is a very hands on activity and participation is a must!
- Positive attitude and readiness to learn and appreciate music of various cultures and genres.

I am ecstatic to be part of the ASU Poly team. I love music and have studied it for many years. My goal for each student is for them to find joy in a new instrument or genre by the end of the school year. I look forward to working with you and your child to achieve this goal.



5th – 8th

Physical Education: Coach Brown



I am very accessible to all families:

- * bbrownasuprep.weebly.com
- * bbrown9@asu.edu
- * 480-727-5361

What to bring on PE Days:

- Every student should wear closed toes shoes. If they are not wearing the proper shoes, they will not be able to participate.
- Students may wear hats and sunglasses outside during PE.
- Bring a positive attitude and willingness to have fun!



Bienvenidos a Español 5-8

- All communication regarding classroom activities and events will be handled through school website.
- All communication regarding classroom behavior and concerns with student progress will be handled through email or phone call home.

Contact information:

- **Email:** christina.caro@asu.edu
- **Weebly:** <http://mcaroasuprep.weebly.com/>
- **Direct:** **480-727-5356**



I am very excited to be working with all of you this year!
This will be our best year yet!!

Un abrazo,

Sra. Caro



From our Health Office

- Immunization:
 - If you were notified by our health assistant, Mrs. G that your child is not current on his/her immunization, please stop by and see her in the health office.
 - If we do not have a current vaccination record on file by Monday, August 6th your child will not be allowed to return to school until he/she is current.



From our Health Office

- Immunization:

Attention 6th Grade families: If your student has turned 11, please turn in a copy of their Tdap and Meningitis vaccines to the health office by the first day of school!!

Health Assistant Contact Information:

- Mrs. Lori Gutierrez
- 480-727-5708
- lagutie3@asu.edu



From our Front Office

- Power School Account:

Attention all PK-8th Grade families: If you do not have a Power School account, please see the Power School table at the resource fair. We strongly encourage all families to visit the ASU Prep Academy Online Payment Portal link:

<http://asuprep.intouchrecepting.com/signin.aspx>

*You will have the ability to make online payments and set up recurring payments for kindergarten and preschool tuition.



ATHLETICS

www.asuprepathletics.com

All 5th – 8th graders may participate in
ASU Prep Athletics



Winter Sports:

Girls Softball
Boys Basketball
Wrestling
Winter Cheer

FALL SPORTS:

tryouts start August 6th

Fall Cheer
Cross Country
Girls Volleyball
Boys Flag Football
Swimming

Spring Sports:

Girls Basketball
Boys Baseball
Track & Field
Coed Soccer

Homework Club 6th-8th only

- Student and Parent must sign homework club contract and walking permission slip.
 - Hours: 3:30 – 4:30pm
 - All students will be released at 4:30!

Notification:

- After 4:30pm students will be allowed to wait in front of the school but will be unsupervised.



Club Poly PK-5

Before and after school care:

AM : starting at 6:15am

PM: 3:15-6:00pm

*See them at resource fair for more information regarding registration and fees.



Add Your Summer Photos to Our padlet page



Scan the QR code with a
QR code scanner on your
phone.

Click the + sign then the
to upload your picture.



Family Resource Fair

- Please visit our family resource fair being held in our Multipurpose Room!



Family Resource Fair

- Polo Shirt Sales
- Uniform Swap
- PTSO
- Lunch Program- Class Touch Catering
- National School Lunch Program Forms
- School Health Assistant – in Health Office
- 5th-8th Athletics Program
- 6th-8th Schedule Distribution



Family Resource Fair

- Club Poly- Before/After School Care
- Drop-off/ Pick-up Procedure
- Family Car Name Plate Pick-up
- Lego Robotics Club- 5th/6th, 7th/8th
- Student Handbooks – release form
- Power School Login Information (if needed)
- Leader In Me
- Scavenger Hunt Prize Pick up



Forms to be Turned In

- National School Lunch Program Form
- Handbook Release Forms
- Walking Permission Slip for 5th-8th





thank
you